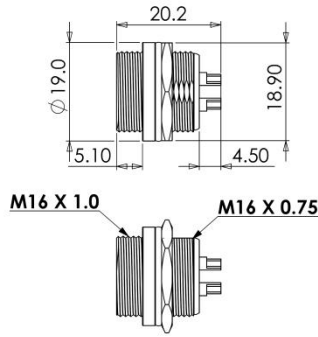
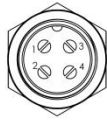
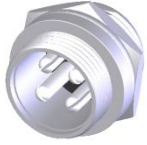


YE-0302 XP CB MIC. SOCKET PANEL MOUNT



MATERIAL :

1. SHIELD COVER : Zn ALLOY NICKEL PTD.
2. SCREW NUT: BRASS NICKEL PTD.
3. HOUSING : BAKELITE
4. TERMINALS : BRASS NICKEL PTD.
5. WASHER: BRASS NICKEL PTD.

SPECIFICATION :

Contact resistance:

300 m Ω max.

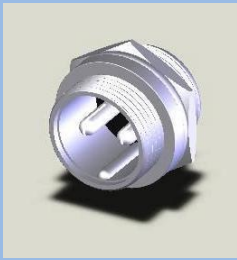
Insulation resistance:

100 MΩ 250V DC

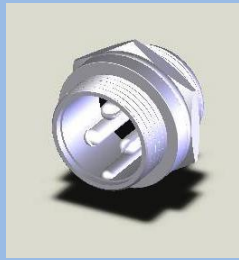
Withstanding voltage:

1 min at 250V AC

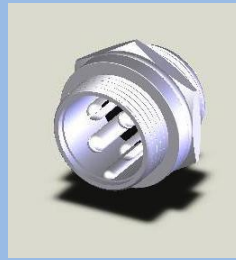
YE-0302 2P	YE-0302 3P	YE-0302 4P	YE-0302 5P	YE-0302 6P	YE-0302 7P	YE-0302 8P



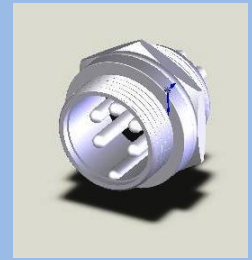
YE-0302 2P



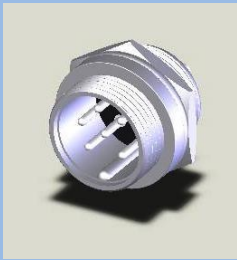
YE-0302 3P



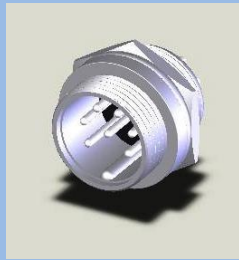
YE-0302 4P



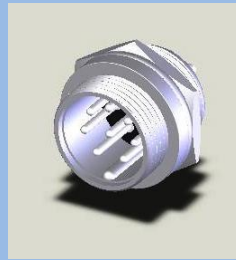
YE-0302 5P



YE-0302 6P



YE-0302 7P



YE-0302 8P